

A photograph of a dining room interior. In the foreground, a dark wooden dining table is set with a bowl of fruit. Several wooden chairs are arranged around the table. To the left, a large wooden sideboard with a glass display cabinet on top holds various decorative items. A window with patterned curtains and a hanging lantern light fixture are visible in the background.



The floor plan shows a rectangular layout. On the left is a large lounge area with a fireplace on the left wall and a bay window on the right. To the right of the lounge is a kitchen with a bay window and a door leading to a sitting room. The sitting room has a fireplace on the left wall and a bay window on the right. A central hallway connects the lounge, kitchen, sitting room, and bedrooms. There is a bathroom (WC) and a closet (C) near the central hallway. The entrance is through a small porch area.

LOUNGE
25'0" x 15'0"
7.6m x 4.6m
Bay

KITCHEN
10'1" x 9'0"
3.0m x 2.8m

SITTING ROOM
15'0" x 7'9"
4.6m x 2.3m

BEDROOM 1
13'0" x 11'0"
3.9m x 3.4m

BEDROOM 2
13'0" x 11'0"
3.9m x 3.4m

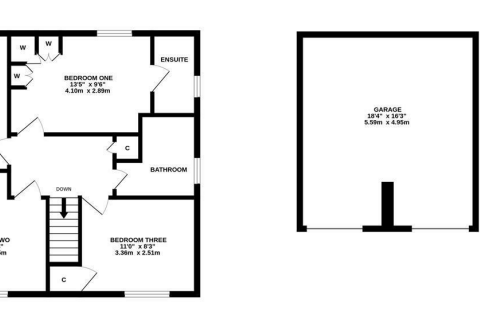
BEDROOM 3
13'0" x 11'0"
3.9m x 3.4m

WC

C

UP

DOWN



TOTAL FLOOR AREA

Whilst every attempt has been made to ensure the accuracy of the information contained in this statement, the prospective purchaser should be aware that this statement is for information only and does not constitute an offer or a contract. The services, systems and materials shown on this statement are subject to change without notice and are to their own risk.

M

TOTAL FLOOR AREA : 1693 sq.ft. (157.3 sq.m.) approx.

Whilst every attempt has been made to ensure the accuracy of the floorplan contained here, measurements of doors, windows, rooms and any other items are approximate and no responsibility is taken for any error, omission or mis-statement. This plan is for illustrative purposes only and should be used as such by any prospective purchaser. The services, systems and appliances shown have not been tested and no guarantee as to their operability or efficiency can be given.

Made with Metropix ©2025



IMPORTANT NOTE: These particulars and the descriptions and measurements herein do not constitute representation and whilst every effort has been made to ensure accuracy, this cannot be guaranteed.

